

REF. CODE — KCELGCWP

COLOR — Celadon

COMPOSITION --- Grasscloth

WIDTH --- 85 cm / 33.5"

WEIGHT — 200 g / m²

VERTICAL REPEAT --- 28,4CM / 11,2"

HORIZONTAL REPEAT --- 85 CM / 33,5"

CARE — Not washable

INSTRUCTIONS — Standard glue, Over engraving, Trimmed.

SOLD BY — Meter (max 50m on a roll)



KOI

by Jennifer Shorto Textiles

REF. CODE — KCHOCGCWP

COLOR — Chocolate

COMPOSITION --- Grasscloth

WIDTH --- 85 cm / 33.5"

WEIGHT — 200 g / m²

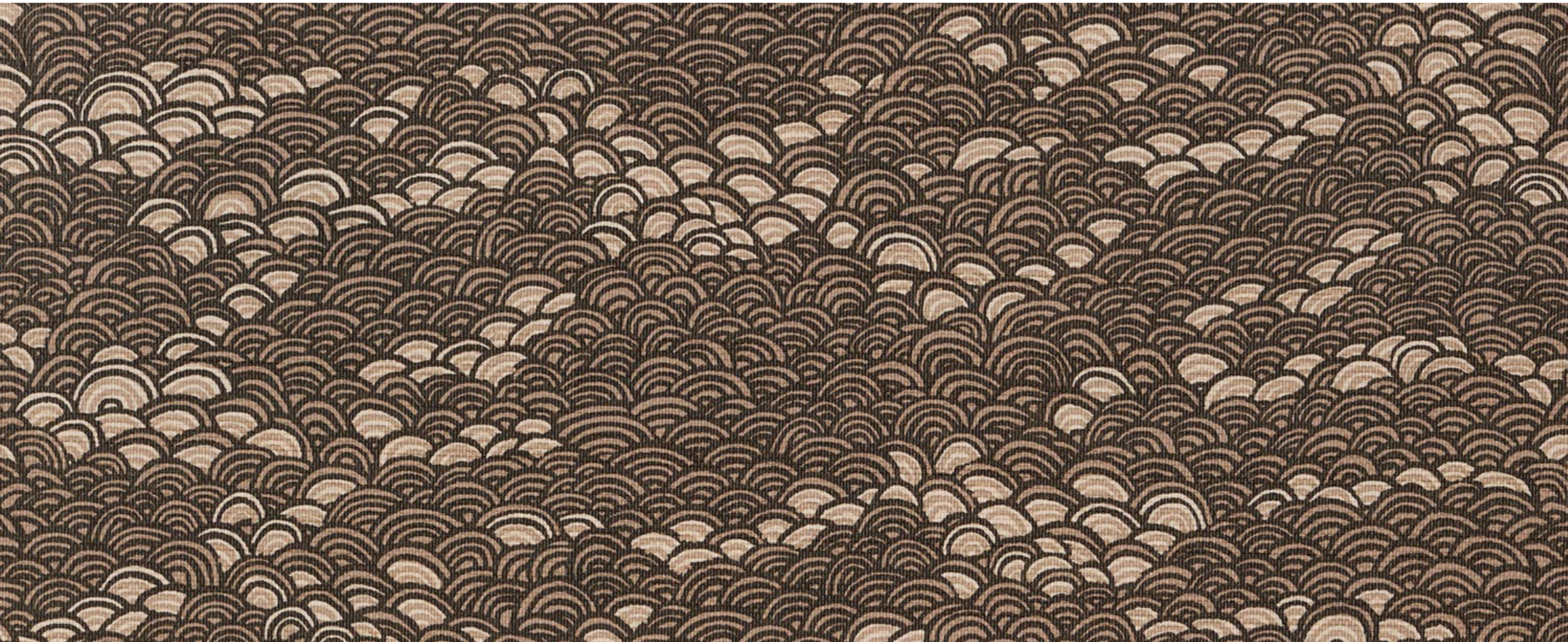
VERTICAL REPEAT --- 28,4CM / 11,2"

HORIZONTAL REPEAT --- 85 CM / 33,5"

CARE — Not washable

INSTRUCTIONS — Standard glue, Over engraving, Trimmed.

SOLD BY — Meter (max 50m on a roll)



REF. CODE — KNEUTGCWP

COLOR — Neutral

COMPOSITION --- Grasscloth

WIDTH --- 85 cm / 33.5"

WEIGHT — 200 g / m²

VERTICAL REPEAT --- 28,4CM / 11,2"

HORIZONTAL REPEAT --- 85 CM / 33,5"

CARE — Not washable

INSTRUCTIONS — Standard glue, Over engraving, Trimmed.

SOLD BY — Meter (max 50m on a roll)



REF. CODE — KSAGEGCWP

COLOR — Sage

COMPOSITION --- Grasscloth

WIDTH --- 85 cm / 33.5"

WEIGHT — 200 g / m²

VERTICAL REPEAT --- 28,4CM / 11,2"

HORIZONTAL REPEAT --- 85 CM / 33,5"

CARE — Not washable

INSTRUCTIONS — Standard glue, Over engraving, Trimmed.

SOLD BY — Meter (max 50m on a roll)



KOI

by Jennifer Shorto Textiles

