

SHY PIPS

by Jennifer Shorto Textiles

REF. CODE — SHYCHARMICAWP or SHYCHARMPWP

COLOR — Chartreuse

COMPOSITION --- Mica paper or Mat paper

USABLE WIDTH --- 140 cm / 55.1"

WEIGHT — 174 g / m²

VERTICAL REPEAT --- 43.7 cm / 17.2"

HORIZONTAL REPEAT --- 140 cm / 55.1"

CARE — Not washable

INSTRUCTIONS — Standard glue, Straight match, Untrimmed, Overlap.

SOLD BY: Meter (max 50m on a roll)



SHY PIPS

by Jennifer Shorto Textiles

REF. CODE — SHYCHOCMICAWP or SHYCHOCMPWP

COLOR — Chocolate

COMPOSITION --- Mica paper or Mat paper

USABLE WIDTH --- 140 cm / 55.1"

WEIGHT — 174 g / m²

VERTICAL REPEAT --- 43.7 cm / 17.2"

HORIZONTAL REPEAT --- 140 cm / 55.1"

CARE — Not washable

INSTRUCTIONS — Standard glue, Straight match, Untrimmed, Overlap.

SOLD BY: Meter (max 50m on a roll)



SHY PIPS

by Jennifer Shorto Textiles

REF. CODE — SHYARGMICAWP or SHYARGMPWP

COLOR — Argile

COMPOSITION --- Mica paper or Mat paper

USABLE WIDTH --- 140 cm / 55.1"

WEIGHT — 174 g / m²

VERTICAL REPEAT --- 43.7 cm / 17.2"

HORIZONTAL REPEAT --- 140 cm / 55.1"

CARE — Not washable

INSTRUCTIONS — Standard glue, Straight match, Untrimmed, Overlap.

SOLD BY: Meter (max 50m on a roll)



SHY PIPS

by Jennifer Shorto Textiles

REF. CODE — SHYCIMMICAWP or SHYCIMMPWP

COLOR — Ciment

COMPOSITION --- Mica paper or Mat paper

USABLE WIDTH --- 140 cm / 55.1"

WEIGHT — 174 g / m²

VERTICAL REPEAT --- 43.7 cm / 17.2"

HORIZONTAL REPEAT --- 140 cm / 55.1"

CARE — Not washable

INSTRUCTIONS — Standard glue, Straight match, Untrimmed, Overlap.

SOLD BY: Meter (max 50m on a roll)



SHY PIPS

by Jennifer Shorto Textiles

REF. CODE — SHYWINEMICAWP or SHYWINEMPWP

COLOR — Wine

COMPOSITION --- Mica paper or Mat paper

USABLE WIDTH --- 140 cm / 55.1"

WEIGHT — 174 g / m²

VERTICAL REPEAT --- 43.7 cm / 17.2"

HORIZONTAL REPEAT --- 140 cm / 55.1"

CARE — Not washable

INSTRUCTIONS — Standard glue, Straight match, Untrimmed, Overlap.

SOLD BY: Meter (max 50m on a roll)



SHY PIPS

by Jennifer Shorto Textiles

REF. CODE — SHYGREYMICAWP or SHYGREYMPWP

COLOR — Grey green

COMPOSITION --- Mica paper or Mat paper

USABLE WIDTH --- 140 cm / 55.1"

WEIGHT — 174 g / m²

VERTICAL REPEAT --- 43.7 cm / 17.2"

HORIZONTAL REPEAT --- 140 cm / 55.1"

CARE — Not washable

INSTRUCTIONS — Standard glue, Straight match, Untrimmed, Overlap.

SOLD BY: Meter (max 50m on a roll)



SHY PIPS

by Jennifer Shorto Textiles

REF. CODE — SHYLICMICAWP or SHYLICMPWP

COLOR — Lichen

COMPOSITION --- Mica paper or Mat paper

USABLE WIDTH --- 140 cm / 55.1"

WEIGHT — 174 g / m²

VERTICAL REPEAT --- 43.7 cm / 17.2"

HORIZONTAL REPEAT --- 140 cm / 55.1"

CARE — Not washable

INSTRUCTIONS — Standard glue, Straight match, Untrimmed, Overlap.

SOLD BY: Meter (max 50m on a roll)



SHY PIPS

by Jennifer Shorto Textiles

REF. CODE — SHYPEACMICAWP or SHYPEACMPWP

COLOR — Peacock

COMPOSITION --- Mica paper or Mat paper

USABLE WIDTH --- 140 cm / 55.1"

WEIGHT — 174 g / m²

VERTICAL REPEAT --- 43.7 cm / 17.2"

HORIZONTAL REPEAT --- 140 cm / 55.1"

CARE — Not washable

INSTRUCTIONS — Standard glue, Straight match, Untrimmed, Overlap.

SOLD BY: Meter (max 50m on a roll)



SHY PIPS

by Jennifer Shorto Textiles

REF. CODE — SHYOCRMICAWP or SHYOCRMPWP

COLOR — Ocre

COMPOSITION --- Mica paper or Mat paper

USABLE WIDTH --- 140 cm / 55.1"

WEIGHT — 174 g / m²

VERTICAL REPEAT --- 43.7 cm / 17.2"

HORIZONTAL REPEAT --- 140 cm / 55.1"

CARE — Not washable

INSTRUCTIONS — Standard glue, Straight match, Untrimmed, Overlap.

SOLD BY: Meter (max 50m on a roll)

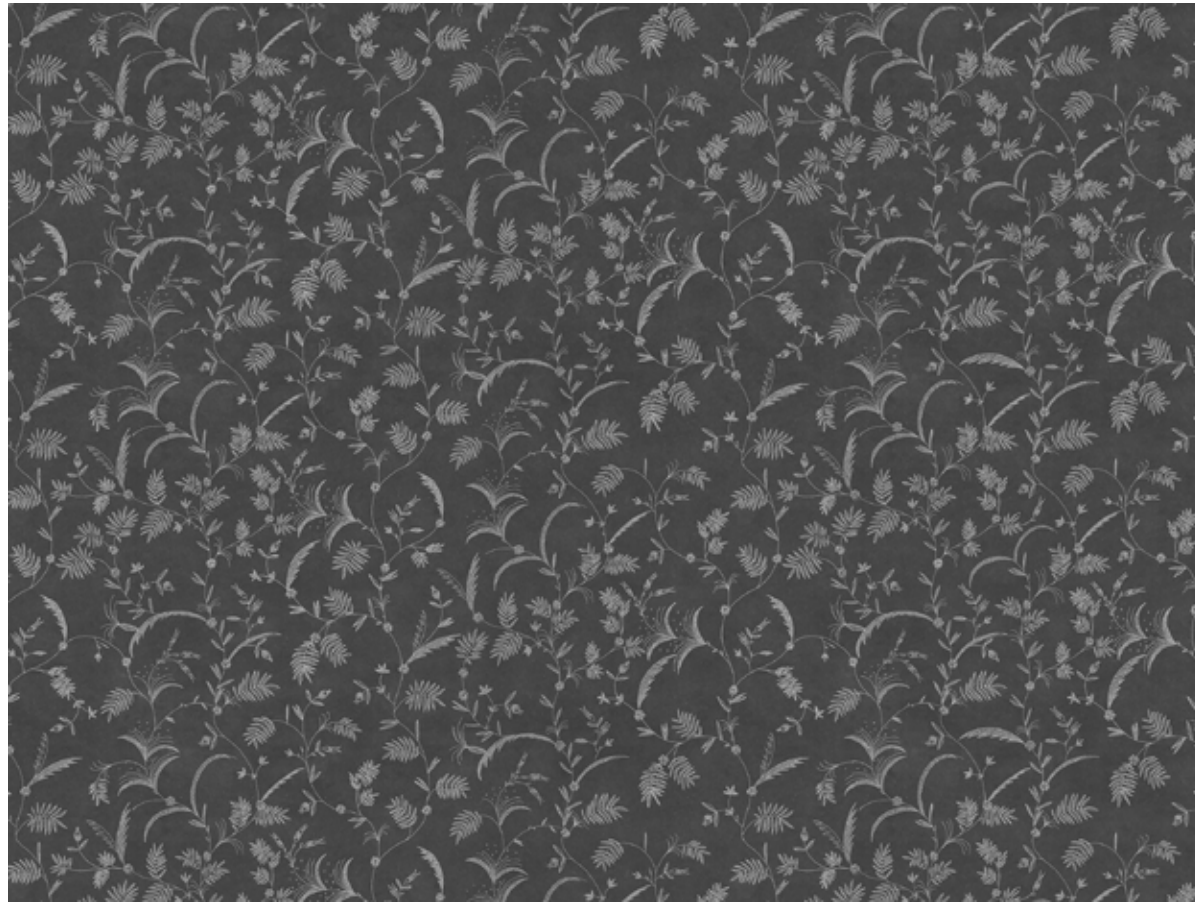


SHY PIPS

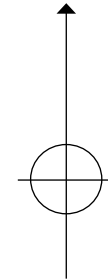
by Jennifer Shorto Textiles

Horizontal repeat
140 cm / 55.1"

Vertical repeat
43.7 cm / 17.2"



Usable width
140 cm / 55.1"



Direction of pattern